

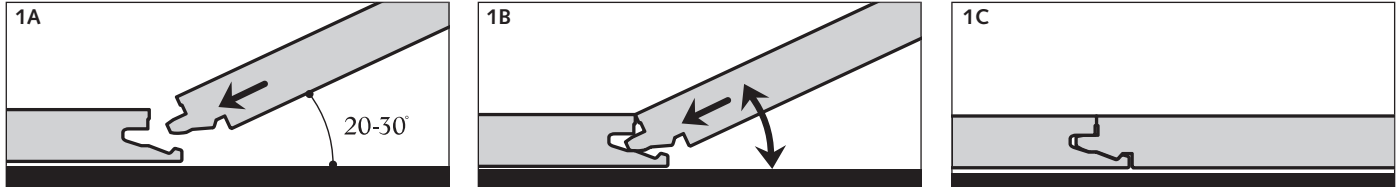
UNICLIC® INSTALLATION INSTRUCTIONS

General

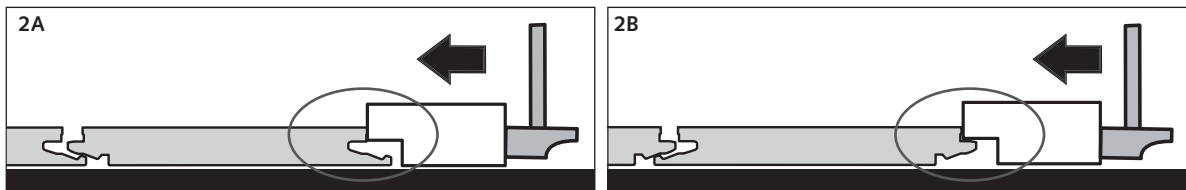
Uniclic® is a revolutionary system for installing laminate floors without using glue. The panels can be clicked together simply thanks to the ingenious shape of the tongue and groove. Uniclic® is unique because you can install the planks in two different ways:

Method A: Position the panel to be installed at an angle of 20 to 30° to the panel already installed. Move the panel gently up and down and at the same time exert forward pressure. The panels will automatically click into place. You can either insert the tongue into the groove, or the groove on to the tongue. The tongue in groove method is the most common and easiest way.

See diagram 1A - 1B - 1C.



Method B: With Uniclic® you can also tap the panels into each other without lifting. For this method you must use the special Uniclic® tapping block. The planks should not be joined with a single tap. To avoid damaging the panels you must tap them together gradually. See diagram 2A - 2B.



Tools for installing the floor

For best results, it is essential that you follow the installation instructions exactly. Besides the regular tools for installing laminate floors (i.e. hammer, saw, pencil, measure) you will also need the following accessories.

- installation kit (crowbar, spacers (1-8 mm / 0,039" -0,315") and Uniclic®-adapted tapping block)
- underlayment system
- maintenance products

The use of accessories other than the Quick•Step® accessories might cause damage to the Quick•Step® floor. In such case the guarantee provided by Quick•Step® will be void. We therefore advise to use only Quick•Step® accessories as these have been especially designed and tested for the use with Quick•Step® floor panels.

Of course we also need to saw the panels. To obtain a clean cut, the pattern side should face down when you use a jigsaw, sabre saw or circular handsaw and up when you use a handsaw or a crosscut saw.

9 focus points

1. Thanks to the Uniclic® system, the floor floats and is installed without glue. You can walk on the floor during and immediately after installation.
2. With Uniclic® panels you can choose where you want to begin. Think about what will be the easiest way to install the floor. We will demonstrate the installation for right-handed people, from left to right. You can work in the other direction if you want.
3. Make sure the panels are mixed sufficiently when you install them, so that you do not end up with too many identical, light or dark panels next to each other.
4. Check all panels in daylight before and during installation. Defective panels must never be used.
5. The floor should preferably be installed parallel to how the light enters the room. The ideal conditions are 15-20°C (59-68°F) at a relative humidity of 50-60%.
6. Let the planks acclimatize for 48 hours in the unopened packaging at the normal room temperature, in the middle of the room where the floor is to be installed.
7. Room humidity can vary according to the season, so it is vital that the floor is able to expand and contract. For this reason, make sure you leave an expansion joint of minimum 8 to 10 mm (5/16" to 3/8") on all sides of the floor, around pipes, thresholds and under doors.
8. Large rooms must have expansion joints every 13 m (40 feet) width-wise to the panels and every 13 m (40 feet) length-wise. It is recommended to provide an expansion joint between different rooms (e.g. under the door). Expansion joints can be finished by means of a molding that is attached to the subfloor.
9. Ensure that the end joints of the panels in two successive rows are never in line. Always ensure that the joints are staggered by at least 15 cm / 6 inches.

Preparing the room

- Check that the doors can still open and close after the floor and underlayment have been installed (minimum + 1 cm (3/8"))
- Check whether the old molding can be removed. You can also leave the wall base and finish the floor with Quick•Step® profiles.
- Make sure the subfloor is flat. Any unevenness greater than 2 mm (1/16") over the length of 1 meter (40") must be smoothed out. It is vital that you use underlayments to smooth any unevenness in the base floor. The specially designed Quick•Step® Combi underlayments have a damp-proof, insulating, noise-reducing and leveling function. The smooth top surface makes installing the laminate panels easier and ensures ample expansion afterwards. You can find more information about Quick•Step® underlayments and how to install them on the underlayment packaging or at your dealer.
- Make sure the subfloor is clean and dry:

CONCRETE SUBFLOOR:

New Construction:

- A new concrete floor must dry at least 1 week per 1 cm (3/8") thickness up to 4 cm (1-1/2"). Thicknesses over 4 cm (1-1/2") require twice as much drying time. For example, a 6cm (2-1/2") concrete subfloor must dry for at least 8 weeks. The moisture content must be less than 2.5% (CM method) or less than 5 lbs/24h.1000sqft (Calcium chloride method ASTM 1869).
- If there is underfloor heating, the subfloor must not exceed 28.8°C (84°F) and the moisture content must be less than 1.5% (CM method). You do need to follow special installation instructions. Please ask your dealer for more information.

Renovation:

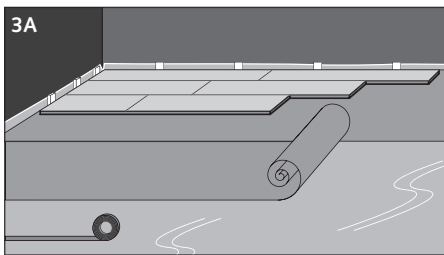
- Remove any damp-porous floor covering (carpet, needle felt, etc.) first.
- Damp-sealed floor covering (PVC, linoleum, VCT, etc.) does not have to be removed. Always use underlayment. We advise to use Quick•Step® underlayment.

WOODEN SUBFLOOR

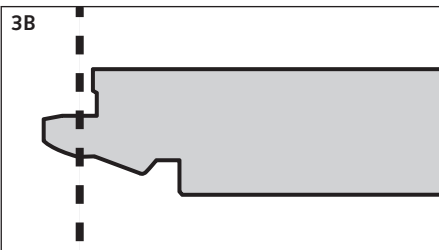
- Remove any existing floor covering first.
- Make sure the plank floor is stable. Nail down any loose parts and apply a leveling layer (Quick•Step® Softboard) if necessary.
- Install the Uniclic® panels crosswise to the direction of the existing subfloor.
- It is necessary that the crawl space under the plank floor is sufficiently ventilated. Remove any obstacles and provide sufficient ventilation (minimum 4 cm (1-1/2") of total ventilation holes per meter (40") of floor). The moisture content of the wood may not exceed 12%.

Installing the floor

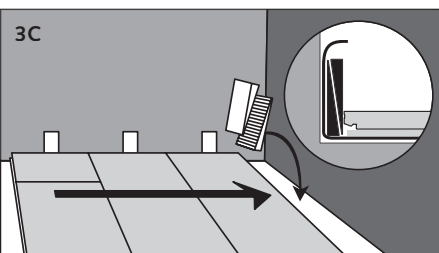
- First install the underlayment, per width and gradually as you progress. If the underlayment is pre-mounted on the panels, then only use the damp-proof 150 µ Screen membrane with adhesive tape as provided. Let the membrane run up the wall a bit before cutting to size. A molding will be attached to this later. **See diagram 3A.**



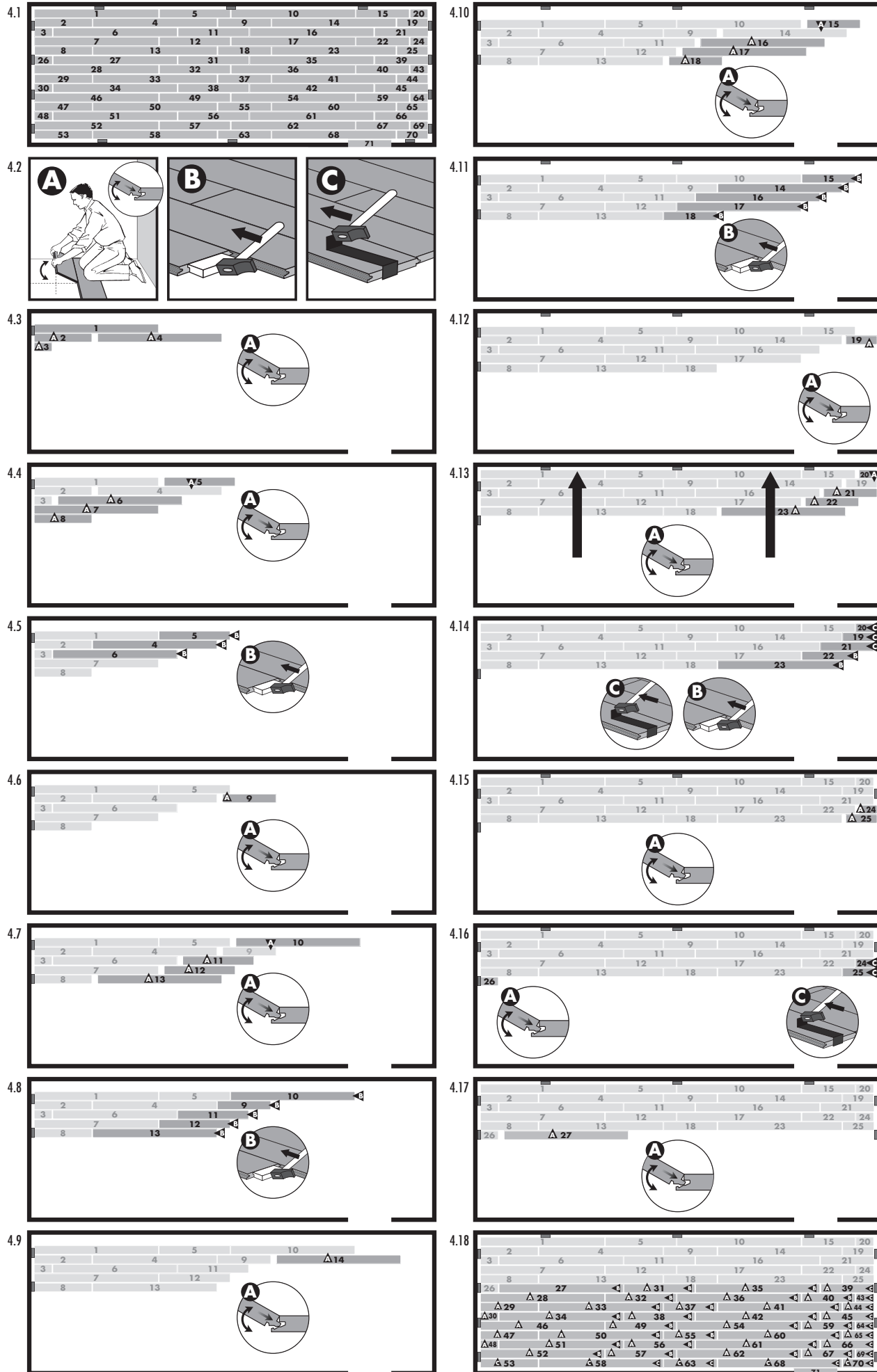
- Begin the first row with a whole plank. First saw off the tongue on both the long and the short sides. **See diagram 3B.**



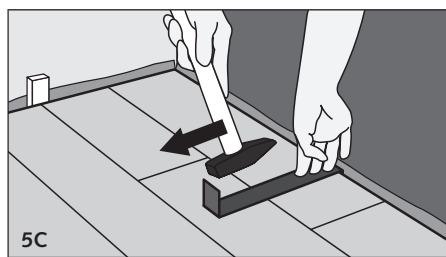
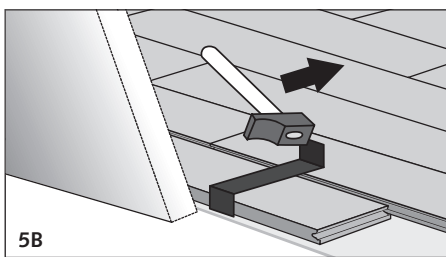
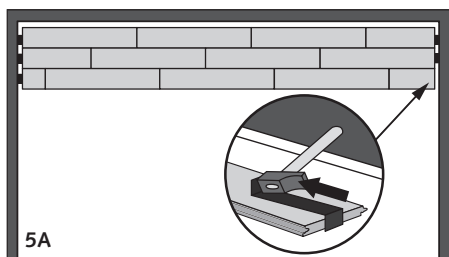
- Put the plank with sawn off sides against the walls. Put spacers from the installation kit between the planks and the wall. This will ensure that your expansion joint is wide enough: 8 to 10 mm (5/16" to 3/8"). **See diagram 3C.**



Each pack contains laminate panels of 3 different lengths (140 cm (55"), 80 cm (30.5") and 60 cm (23.5")). Make sure that you always install the panels in the following order: 140 cm/80 cm/140 cm/60 cm /140 cm /80 cm (55"-30.5"-55"-23.5"-55"-30.5") and so on. Install the first row with the tongue side towards the wall. Saw off the long and the short tongue of the first panel. Start installation with a panel measuring 140 cm (55"). The first panel of the second row must be 60 cm (23.5") or 80 cm (30.5") long. Saw off the first 10 cm (3.9") of this panel. The diagrams indicate where the Uniclic® panels are clicked together by angling up and down or where they are tapped together flat. Follow the diagrams precisely. See diagrams 4.1 > 4.18.



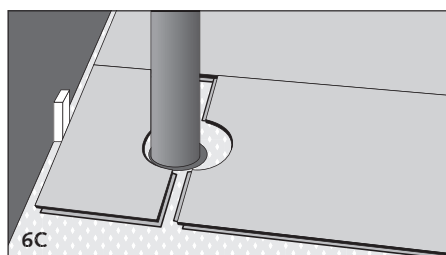
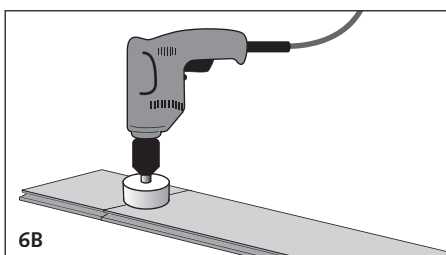
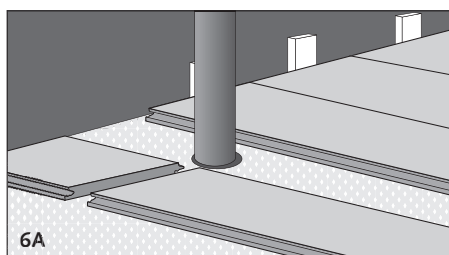
- In places where it is too difficult to install the Unilic® planks with the tapping block (e.g. against the wall), you can tap them together using the crowbar and a hammer. See diagrams 5A - 5B - 5C.



- There must also be an 8 to 10 mm (5/16" to 3/8") expansion joint between the last row and the wall. Keep this in mind when sawing the last row of panels.

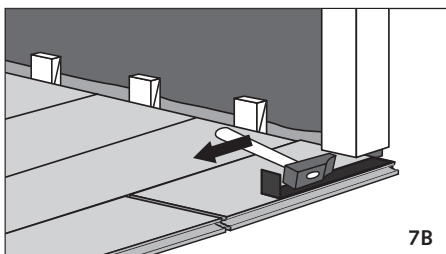
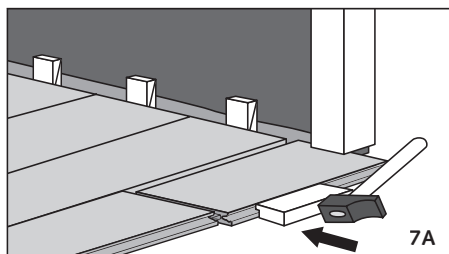
Pipes

In rows where there is a pipe, make sure the pipe falls exactly in line with the short side of two panels. Take a drill bit with the same diameter as the pipe plus 20 mm (3/4") for the expansion. Click the panels together on the short side and drill a hole centered on the joint between the two panels. Now you can install the panels in the floor. See diagrams 6A - 6B - 6C.



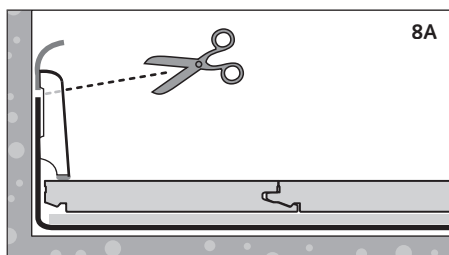
Under doorframes

When sawing the panels ensure that the expansion joint under the door is at least 10 mm (3/8"). If you cannot lift the panel, use an adapted tapping block or crowbar and hammer to tap the panels together with the planks are flat on the floor. See diagrams 7A - 7B.



Finishing

- Remove all spacers.
- Install the molding on the plastic membrane that runs up the wall from under the floor. Never attach the molding to the floor. This method allows the floor to expand and contract under the molding.
- For a perfect finish around pipes, use rosettes or caulking.
- In places where profiles or skirting cannot be placed, fill expansion gaps with caulking. See diagram 8A.



Precautions

- Protect furniture and chair legs with proper felt or plastic caps.
- Avoid bringing dirt, water and sand indoors by providing a suitable floor mat at the door.
- Use (office) chairs and seats with soft wheels that are suitable for a laminate floor and/or use a suitable desk mat.
- Ensure that humidity in the room is always at least 50%. Use a humidifier if you need to.

Maintenance

- The smooth surface of your laminate means it never retains dirt or dust.
- Never use wax or varnish coating on the floor.
- For dry maintenance, we advise a Quick•Step® duster (flipper) or vacuum cleaner.
- For slightly damp maintenance, we advise the Quick•Step® maintenance set, which you spray diluted with water (see instructions) on the Quick•Step® duster. Be aware that the use of other cleaning products might damage your floor. Always wipe dry immediately until no more moisture is visible on the floor. We strongly recommend dry cleaning only for beveled edge products.
- Wet maintenance is absolutely forbidden. Remove any water immediately. Uniclic® panels are not suitable for use in damp spaces like bathrooms and saunas.
- Remove stubborn stains carefully with acetone based fingernail polish remover. Never use scouring products!

Enjoy your floor.